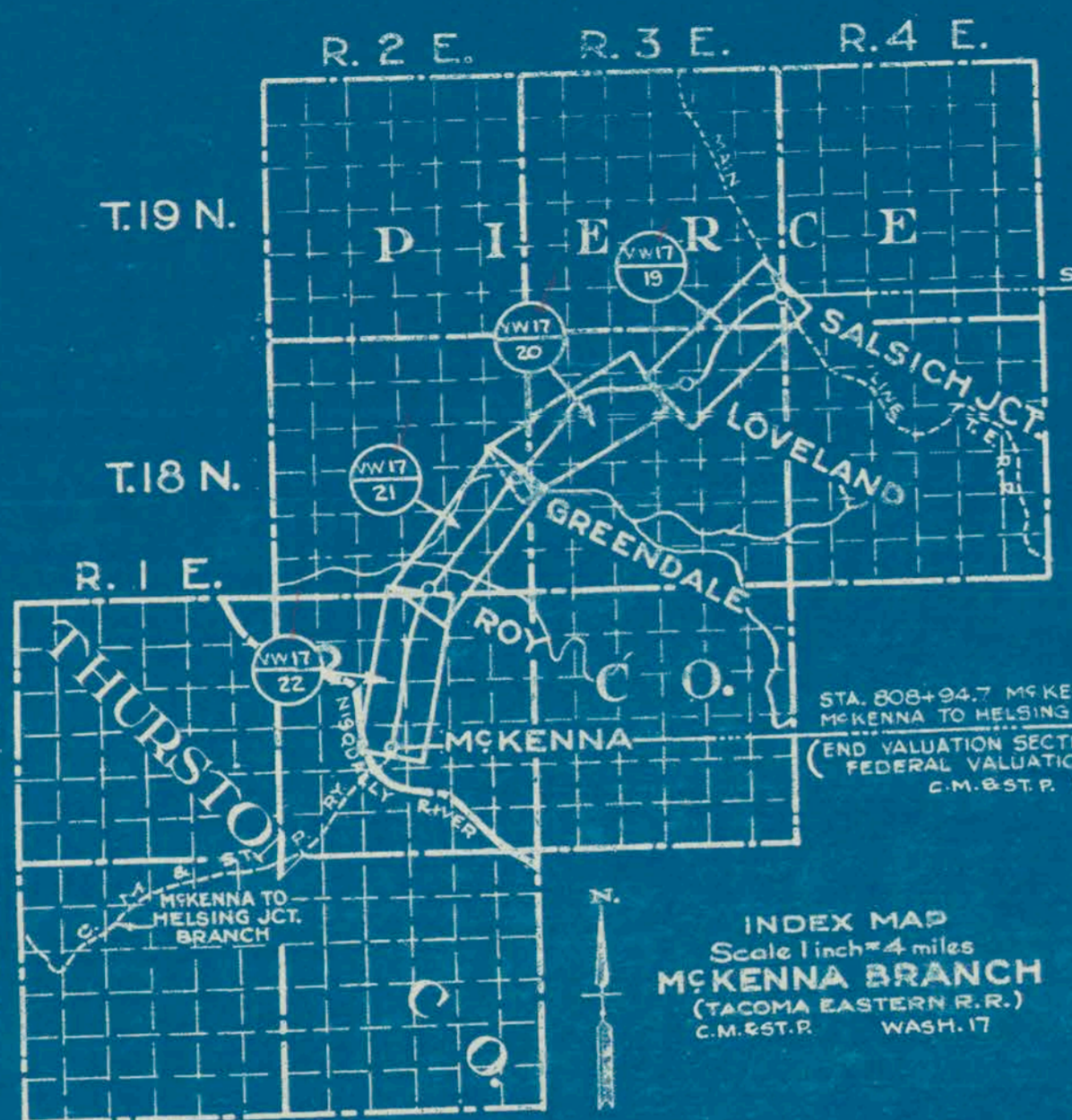


PAGE NO.	GRANTOR	GRANTEE	INSTRUMENT	DATE	RECORD	CUSTODIAN'S NO.	REMARKS
1	Northern Coast Timber Co.	Tacoma Eastern R.R.Co.	W.D.	11-3-12	361, 42, Nov.	21215	13594
2	State of Washington	FERROCo.	W.D.	10-15-12	359, 29, Mar.	11, 1917	13593
3	State of Washington	FERROCo.	W.D.	4-4-06	436, 282, Apr.	15, 1905	13596
4	State of Washington	FERROCo.	W.D.	4-4-06	320, 327, Apr.	15, 1905	13595
5	O.L. Anderson & Wife	FERROCo.	W.D.	11-22-07	357, 296, Nov.	2, 1907	13598
6	Michael Sustace & Wife	FERROCo.	W.D.	9-27-07	356, 157, Oct.	10, 1907	13591
7	Michael Sustace & Wife	FERROCo.	W.D.	9-27-07	356, 157, Oct.	10, 1907	13591
8	Samuel T. Middleton	FERROCo.	W.D.	9-27-07	356, 157, Oct.	10, 1907	13591
9	Samuel T. Middleton	FERROCo.	W.D.	9-27-07	356, 157, Oct.	10, 1907	13591
10	Theodore Fleaushner & Wife	FERROCo.	W.D.	9-27-07	356, 157, Oct.	10, 1907	13591
11	Thomas Turnee & Wife	FERROCo.	W.D.	11-16-07	356, 238, Nov.	10, 1907	13592
12	Francis Bell Allen	FERROCo.	W.D.	6-3-06	359, 259, Nov.	20, 1905	13590
13	Warren B. Johnston	FERROCo.	W.D.	10-25-07	357, 353, Oct.	20, 1907	13591
14	Joseph Thiel & Wife	FERROCo.	W.D.	9-27-07	355, 486, Oct.	6, 1907	13592
15	John Thiel & Wife	FERROCo.	W.D.	10-2-07	355, 489, Oct.	6, 1907	13593
16	Joseph Thiel & Wife	FERROCo.	W.D.	9-27-07	355, 486, Oct.	6, 1907	13592
17	John Thiel & Wife	FERROCo.	W.D.	10-2-07	355, 489, Oct.	6, 1907	13593
18	Joseph Thiel & Wife	FERROCo.	W.D.	9-27-07	355, 486, Oct.	6, 1907	13592
19	John Thiel & Wife	FERROCo.	W.D.	10-2-07	355, 489, Oct.	6, 1907	13593
20	John Napier, Executor, et al	FERROCo.	W.D.	11-14-07	355, 476, Nov.	15, 1907	13591
21	John Napier, Executor, et al	FERROCo.	W.D.	11-14-07	355, 476, Nov.	15, 1907	13591
22	John Napier, Executor, et al	FERROCo.	W.D.	11-14-07	355, 476, Nov.	15, 1907	13591
23	Henry D. Horton & Husb.	FERROCo.	W.D.	11-29-07	356, 265, Nov.	10, 1907	13586
24	Henry Ehlers, et al	FERROCo.	W.D.	10-9-07	356, 156, Oct.	10, 1907	13590
25	Henry Ehlers, et al	FERROCo.	W.D.	10-9-07	356, 156, Oct.	10, 1907	13590
26	Henry Ehlers, et al	FERROCo.	W.D.	10-9-07	356, 156, Oct.	10, 1907	13590
27	Henry Ehlers, et al	FERROCo.	W.D.	10-9-07	356, 156, Oct.	10, 1907	13590
28							
29	Anne Elcher & Husb.	FERROCo.	W.D.	9-27-07	356, 157, Oct.	4, 1907	13587
30	Anne Elcher & Husb.	FERROCo.	W.D.	9-27-07	356, 157, Oct.	4, 1907	13587

Not owned. Held by occupancy, irregular strip for Co. landing platform in S<sup>1</sup> 481 Sec. 10, T18N R3E.



SOLD BY Q.C.D. ON DEC 11, 1990 TO CHEHALIS WESTERN R.R. CO.

RIGHT OF WAY AND TRACK MAP  
**CHICAGO, MILWAUKEE & ST. PAUL RY. CO.**  
 OPERATED BY THE  
 CHICAGO, MILWAUKEE & ST. PAUL RY. CO. T 64-19  
 COAST DIVISION MAIN LINE  
 STATION 37+09.3 TO STATION 212+12.8  
 SCALE 1" = 400 FT. JUNE 30 1918  
 OFFICE OF VALUATION ENGINEER  
 CHICAGO, ILLINOIS

Sheet No. 19 of 27 sheets of C. M. & St. P. Ry. Co. Main Line  
 from survey station 37+09.3 to survey station 212+12.8  
 Valuation Engineer

WASH. 19